

# WIRELESS CCTV

## SUPPORT GUIDE: How to Access Footage Using PC Archive



**Originated by:**  
**Emma Buckley**  
Customer Support Co-Ordinator

**Validated by:**  
**Daniel del Soldato**  
Marketing Manager

Date: Tuesday, 30 April 2019  
Tel: 01706 63 11 66  
Email: [support@wcctv.com](mailto:support@wcctv.com)

Wireless CCTV Ltd, Charles  
Babbage House, Kingsway  
Business Park, Rochdale,  
OL16 4NW

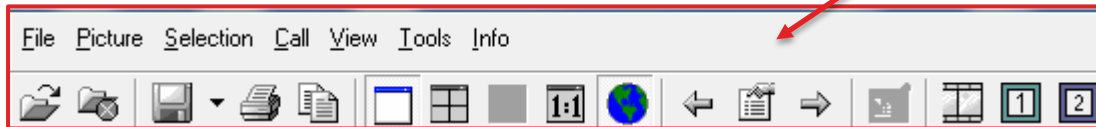


## How to Access Footage Using PC Archive

Return to the main screen of the software, from here you should be able to access 'PC Archive'. You should be presented with a screen similar to the one below.



Call list icon



From here you will need to select the 'Call List' to bring up the files that have been recorded on to the PC's archive.

This will bring up a list of all the calls that have been made into the cameras. This will include live monitoring and instances where you have accessed site archive.

You will need to find the record you wish to use and review.

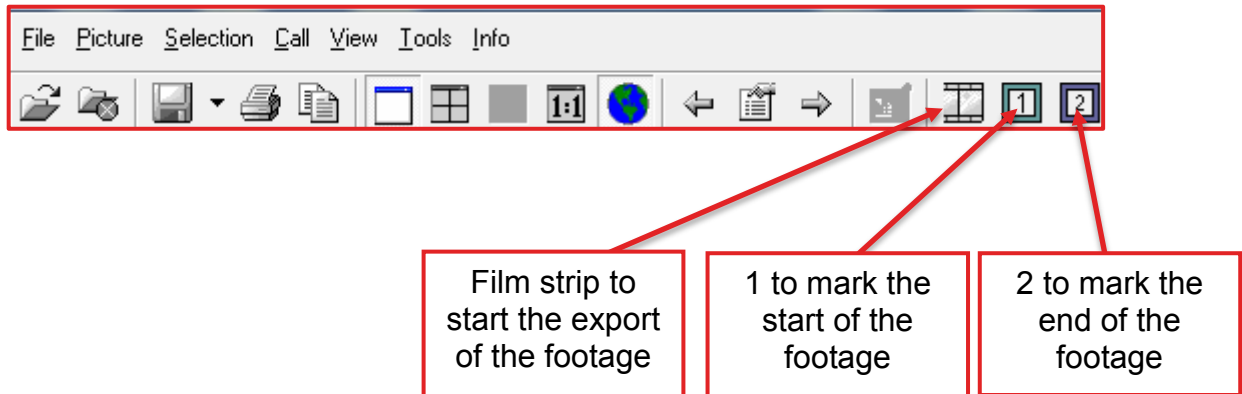
Call	Time	Type	Transmitter
152	2011-01-31 15:11:09		WCCTV
153	2011-01-31 15:13:33		Ravenna Rd.Redhs
154	2011-01-31 15:42:48		Ravenna Rd.Redhs
155	2011-02-01 09:11:56		WCCTV
156	2011-02-01 13:31:06		3G 466-863
157	2011-02-01 13:32:53		3G 465-903
158	2011-02-01 13:38:02		3G 465-903
159	2011-02-01 13:39:58		3G 466-863
160	2011-02-01 14:09:47		HSUPA 133
161	2011-02-01 14:11:20		HSUPA 265
162	2011-02-01 14:37:28		3G 466-863
163	2011-02-01 14:37:49		3G 465-903
164	2011-02-01 14:43:58		3G 465-903
165	2011-02-01 14:49:06		HSUPA 133
166	2011-02-01 14:49:41		HSUPA 265
167	2011-02-01 14:51:21		Hectorage Road
168	2011-02-01 14:54:25		HSUPA 266
169	2011-02-01 15:14:54		HSUPA 265
170	2011-02-01 15:15:34		HSUPA 266
171	2011-02-01 15:15:54		HSUPA 133
172	2011-02-02 10:47:34		WCCTV

List of calls made to the different cameras

Once selected, you will be able to move the grey slider along the bottom of the software to review different parts of the footage.

To export the footage from the software and make it available to other users, you will first need to select a start and end to the footage.

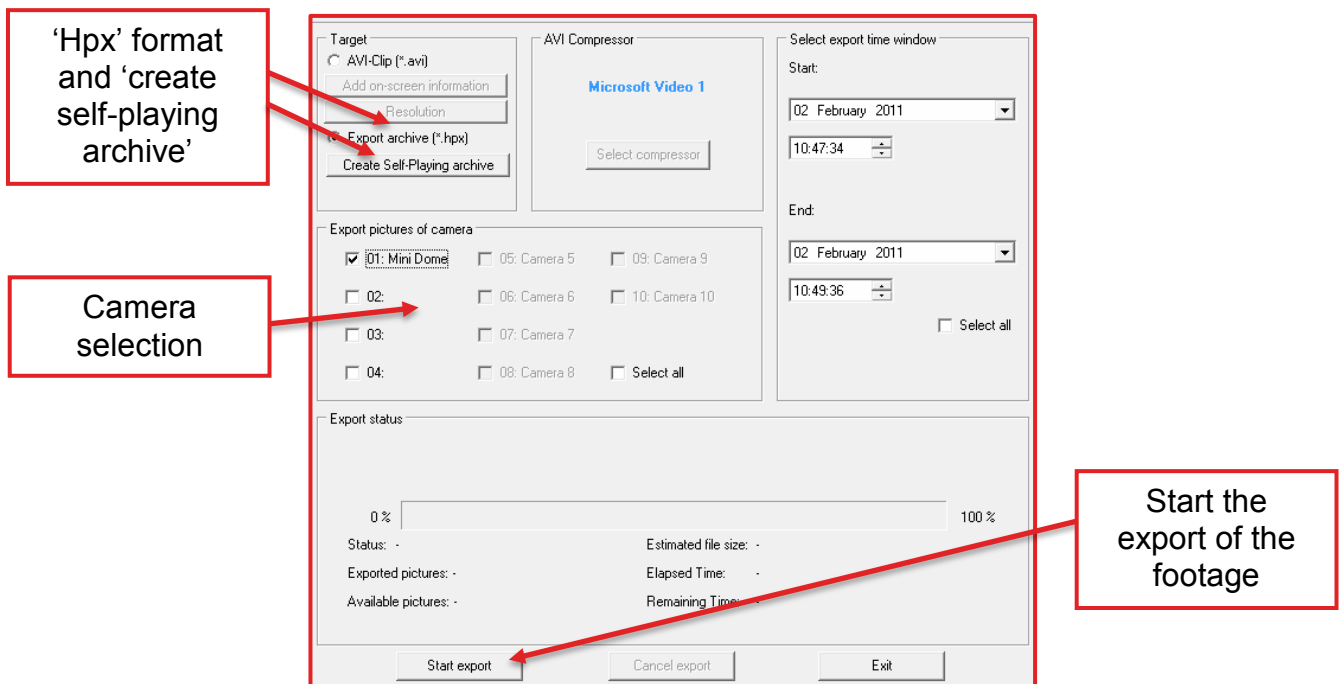
To do this you will need to select the start of the footage, and mark it using the number '1' symbol along the top task bar.



Select the ending of the footage, and to mark it select the number '2' symbol.

Now that you have selected the length of footage you need, it will need to be exported. To do this select the 'Film Strip' icon, which is detailed in the above diagram.

You will then be presented with this screen.



Here you will first need to select which camera it is your using as detailed above.

To make the file evidentially sound, it is always best to export the file in the 'hpx' format. This will not allow the images to be tampered with or changed.

You may also wish to check the box labelled 'Create Self-Playing Archive'. This will allow the footage to be packaged with its own media player, as the file will not open with any other media player. This makes it easier for other users to view the footage on their own laptops/PC.

To start the export of the footage, you will need to select 'Start Export'. It will ask you to save the footage, choose a folder that you will be able to remember, and something that will be easy for you to find once the export is complete.

Once you've chosen this, and selected 'OK' the export will begin. Depending on how big the file is, it may take some time for it to export.

Once the export is complete, the file can be transferred on to removable media such as memory sticks and CD ROMs.