

WIRELESS CCTV

SUPPORT GUIDE: How to Download Footage Using Site Archive



Originated by:
Emma Buckley
Customer Support Co-Ordinator

Validated by:
Daniel del Soldato
Marketing Manager

Date: Tuesday, 30 April 2019
Tel: 01706 63 11 66
Email: support@wcctv.com

Wireless CCTV Ltd, Charles
Babbage House, Kingsway
Business Park, Rochdale,
OL16 4NW



FM 99538



IS 687662



How to Download Footage Using Site Archive

Evaluation with Optimal Speed

This is used for downloading footage over 3G.

- Select the camera you would like to download footage from, and dial into it.
- Select **'Site Archive'** located on the left hand side of the screen.

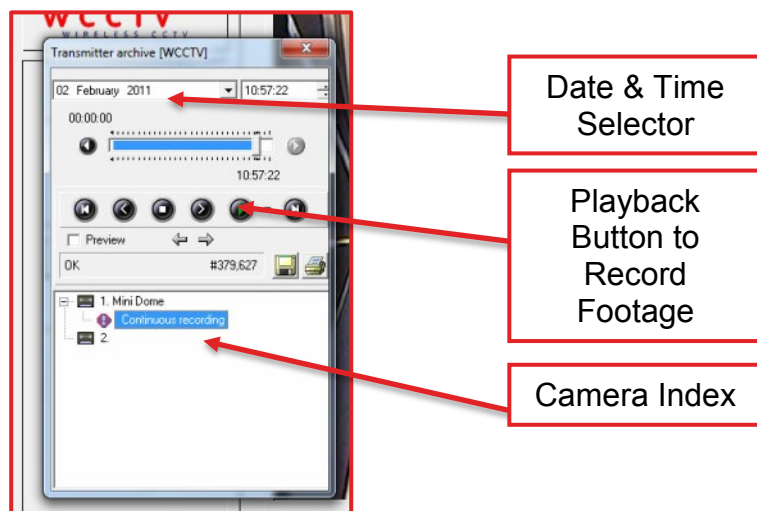


You will be presented with 2 options:

- **Evaluation with Optimal Functionality:** this is needed when you are accessing the camera footage over a Wi-Fi connection (usually when you are right by the camera)
- **Evaluation with Optimal Speed:** this is needed when accessing the camera footage over 3G

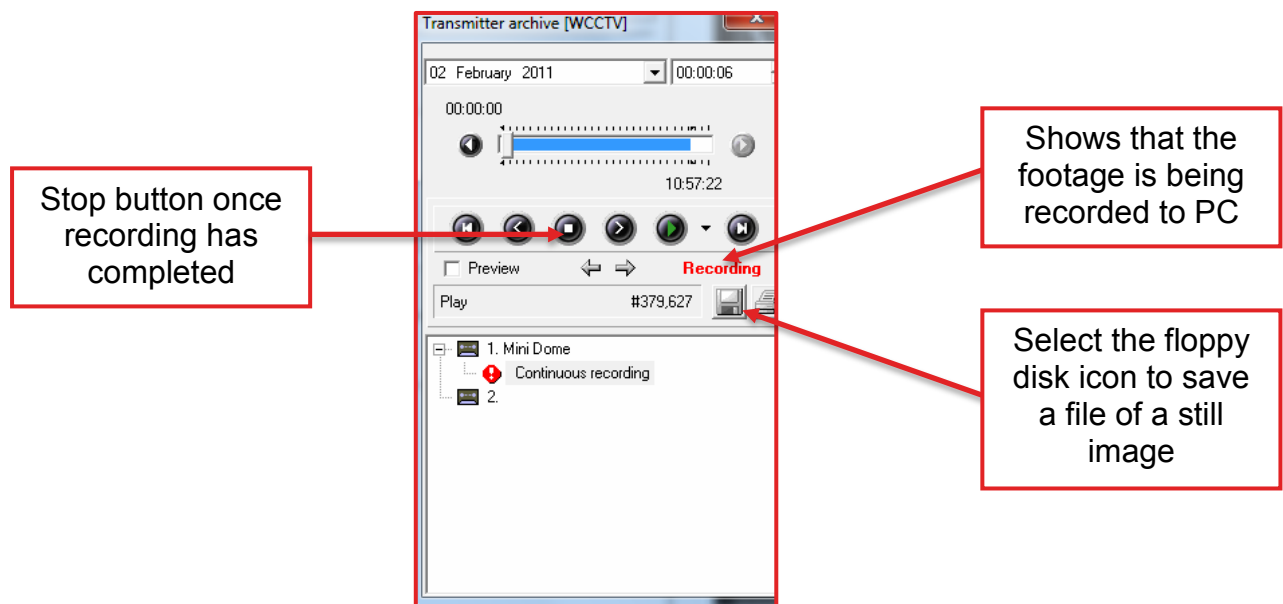
Select **'Evaluation with Optimal Speed'**

A new window will appear named **'Transmitter Archive'**



Select which camera you want to access by clicking on **'Continuous Recording'**, and it will then allow you to change the time and date.

- Select the date and time of the footage that you would like to retrieve from the hard drive.
- **Note:** Retrieving footage over 3G will take considerably longer to download. If you're looking to download a large amount of footage, anything over 10-20minutes, it is advised that you should try to connect via Wi-Fi to the camera if possible.
- To commence the download of the footage, you will need to select the green **'Play'** button from the task bar.
- You will see that red text appears-**Recording** (the pictures will advance in slow motion as this is done over 3G)



Once you have finished recording, press the **'Stop'** button and recording will cease. To exit the **'Transmitter Index'** click the red **'X'** in the top right hand corner of the box. You are now able to hang up the connection to the camera, so that you are able to access the downloaded footage.

- To save a still image of the footage, you will need to select the **'Floppy Disk'** icon. This will save a copy of the picture in your WCCTV REC file. This is located in your C: Drive in **'My Computer'**. In here you should see WCCTVREC. Within this folder, you should be able to locate another folder called **'Snapshots'**. In here you will find your still images.
- To now export the footage, please see section 26-PC Archive.