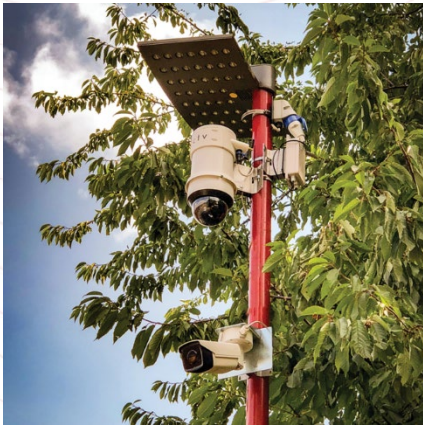


WIRELESS CCTV

SUPPORT GUIDE: How to Set a Tour on a 4G Mini Dome



Originated by:
Emma Buckley
Customer Support Co-Ordinator

Validated by:
Daniel del Soldato
Marketing Manager

Date: Tuesday, 30 April 2019
Tel: 01706 63 11 66
Email: support@wcctv.com

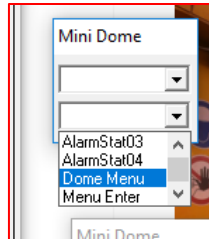
Wireless CCTV Ltd, Charles
Babbage House, Kingsway
Business Park, Rochdale,
OL16 4NW



How to Set a Tour on a 4G Mini Dome

A tour will allow you to take all of the presets you have created and loop them all together. This will mean that the camera will visit each preset you have selected rather than looking at just one fixed position.

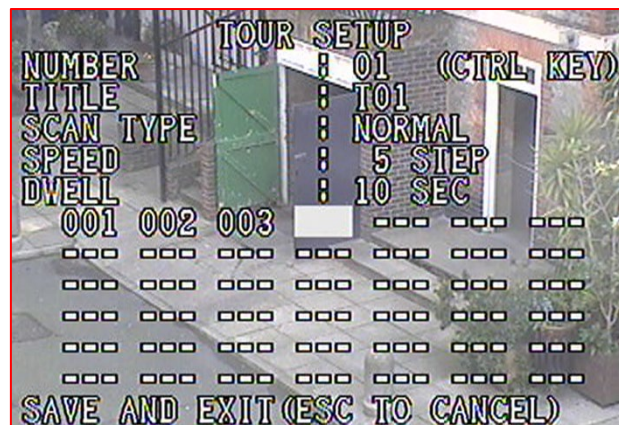
Select the bottom Drop Down Box and select **Dome Menu**



Use your arrow keys to move to **Tour** and use the **Z+** button to select



Use your arrow keys to move down to **Dwell** and select **Z+ / Z-** to change the order in which the presets are played



Once all positions are set, select **Save and Exit** and then select **Exit**