

WIRELESS CCTV

SUPPORT GUIDE: How to Update PTZ Controls



Originated by:
Emma Buckley
Customer Support Co-Ordinator

Date: Tuesday, 30 April 2019
Tel: 01706 63 11 66
Email: support@wcctv.com

Validated by:
Daniel del Soldato
Marketing Manager

Wireless CCTV Ltd, Charles
Babbage House, Kingsway
Business Park, Rochdale,
OL16 4NW

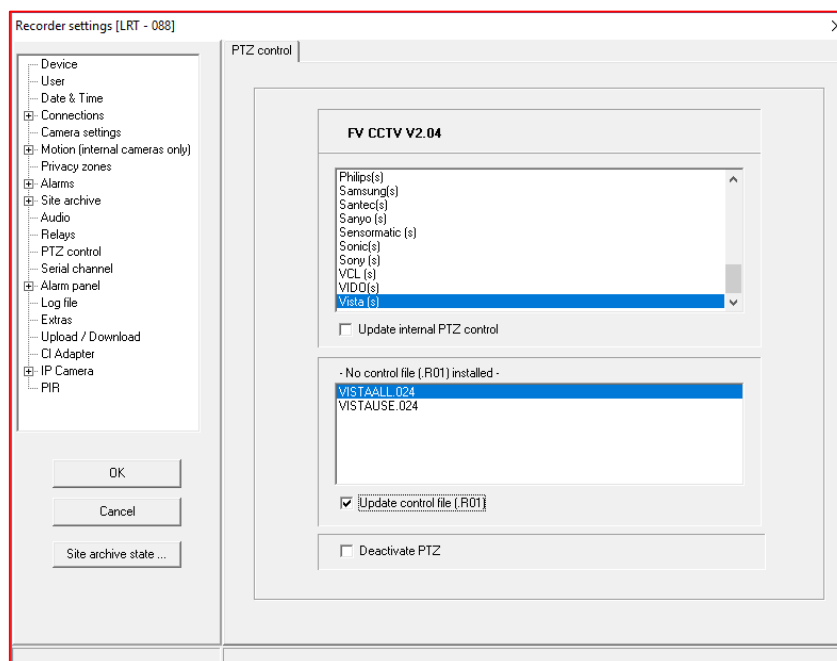
How to Update the PTZ (Pan, Tilt, Zoom) Controls

The PTZ controls on the camera are the protocols that allow you to move the camera to different positions. You will need to activate in order to set your presets and tours.

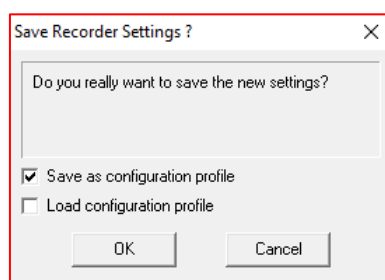
Once dialled into the camera, select **Setup**

Select **PTZ Control**. In the top drop down menu, select **Vista (s)**

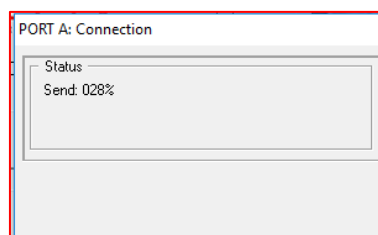
Select **Update Control File** and then select **OK**



Select **Save as Configuration Profile** and select **OK**



This file will then load on screen as below



Once loaded, place your mouse around the edges of the live view screen until you see a grey arrow. Hold your mouse down for a few seconds and the camera should move in the direction you have requested

To zoom in/out of the image, place your mouse towards the middle/left of the screen. Here, you should see Z+ or Z-. Hold your mouse down for a few seconds and the camera should zoom in/out