

# WIRELESS CCTV

## SUPPORT GUIDE: Setting up a New User Account



**Originated by:**  
**Emma Buckley**  
**Customer Support Co-Ordinator**

**Date:** Tuesday, 30 April 2019  
**Tel:** 01706 63 11 66  
**Email:** [support@wcctv.com](mailto:support@wcctv.com)

**Validated by:**  
**Daniel del Soldato**  
**Marketing Manager**

Wireless CCTV Ltd, Charles  
Babbage House, Kingsway  
Business Park, Rochdale,  
OL16 4NW

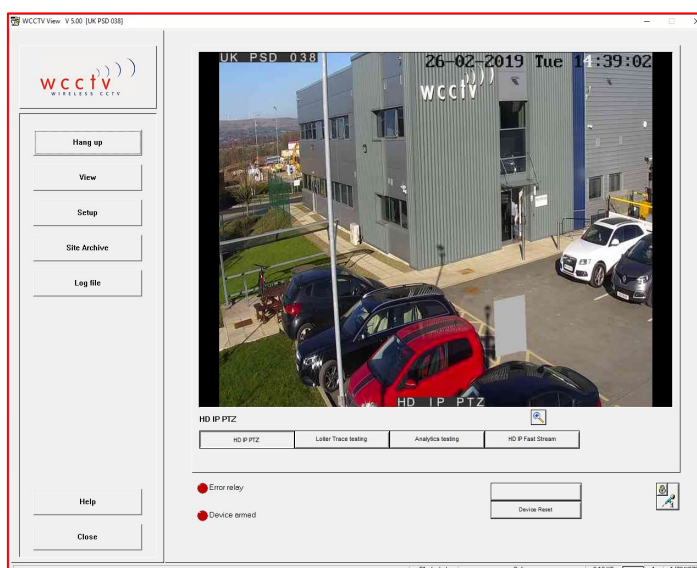


# Setting Up New User Accounts

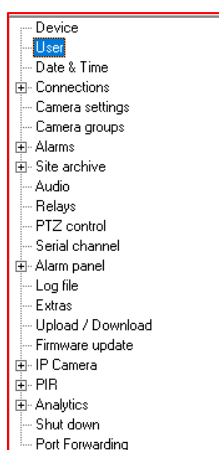
You may wish to make user accounts for each of the individuals who will use the camera. By doing this you can limit what each user is allowed access to, whether that is moving the camera, or accessing the setup menu altogether.

Dial into the camera that you wish to set the User accounts up on

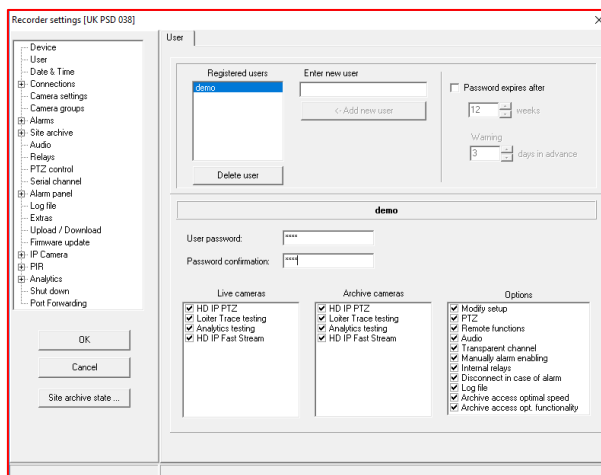
Select **Setup**



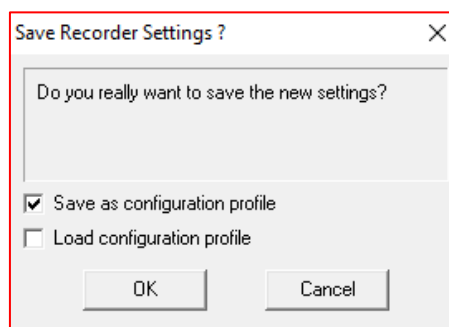
Select **User**



Input a Username under **Enter New User** and select **Add New User**  
 Input a Password next to **User Password** and confirm this Password next to **Password Confirmation**  
 Put a tick in all of the boxes that you want the User to access  
 Select **OK**



Select **Save as Configuration Profile**  
 Select **OK**



Hang Up from the camera and dial back in with the new Username/Password

### Camera Functions:

**Modify Setup:** Enables full control of editing camera setup

**PTZ:** Allows the control of the Pan, Tilt & Zoom functionality of the camera

**Internal Relays:** Ability to access/edit relay controls assigned to camera (i.e. Device Reset)

**Log File:** Ability to access the Camera Log file

**Archive Access optimal speed:** Downloading and reviewing footage Via Mobile Network

**Archive Access opt. functionality:** Downloading and reviewing footage Via Wi-Fi

**Please Note: You can allow up to 26 user accounts on the WCCTV software.**

**If you create a password on the supplied equipment, and you forget this password, there is no way of recovering what the password should be.**

**WCCTV do not store any passwords you make.**

**In order to rectify this, the equipment will need to be returned to WCCTV to be reset. There will be a charge for this of £100.**