

WCCTV

---



# Civil Engineering Site Security

# Mobile Security Systems For Infrastructure Projects



## Live Monitored CCTV for Linear and Remote Sites

**Securing infrastructure and civil engineering projects isn't straightforward. These sites are often large, spread across multiple locations and without access to power or internet.**

WCCTV's live monitored CCTV systems are designed to: deter theft, trespass and plant damage, secure compounds, access points and high-value assets and provide oversight across remote or unattended worksites.

We deliver a fully managed service that removes the security burden from your team. Every deployment includes: equipment hire, delivery and system setup, 24/7 NSI Gold Accredited live monitoring and mobile keyholding, maintenance, diagnostics and full technical support and access to live and recorded footage via app and desktop.

[Get a Quote Today](#)

# Why Civil Engineering Contractors Choose Us

## Managed Service

We manage installation, monitoring, maintenance, and relocations - so your team doesn't have to handle equipment or chase third parties. It's a simple, reliable solution that lets you stay focused on project delivery.

## Rental Systems

You can rent our systems for the full duration of your project phase, whether short-term or extended. Once the work is complete, we take care of collection - with no storage, servicing, or ongoing management required on your end.

## Crime Deterrent

All our security cameras and systems offer a strong visual presence, backed by features like live audio challenges, flashing lights, and alarms - helping deter threats before they escalate.

## Remote Monitoring

Log in via desktop or mobile to view footage, verify deliveries, or monitor site progress in real time. Prefer a hands-off approach? Our NSI Gold Accredited monitoring partners can watch over your site 24/7, alerting you only when action is required.

## Reduce Costs

Our fully managed security service delivers proactive, around-the-clock protection at a fraction of the cost of traditional guarding. Combining video analytics, remote monitoring, and rapid response, it offers a smarter, more efficient form of security.

## Built for Construction

With no need for power or internet, our systems are perfectly suited for roadside works, drainage projects, embankments, and other remote or hard-to-access areas - delivering reliable security wherever it's needed most.

# Cameras for Infrastructure Security

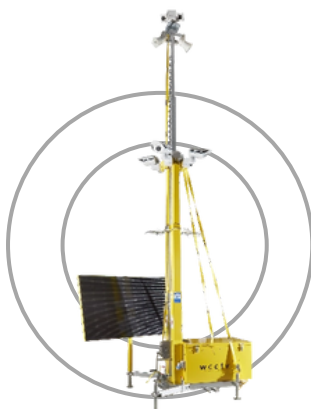


**Eco Tower**

The WCCTV Eco Tower is a battery-powered CCTV solution ideal for reducing fuel use, noise, and emissions on low-power sites.



[Learn More](#)



**Solar Fuel Cell Tower**

The WCCTV Solar Fuel Cell Tower is a self-powered CCTV unit for remote sites, running without mains power or generators.



[Learn More](#)



**Thermal Solar Tower**

The WCCTV Thermal Solar Tower is a solar-powered, thermal CCTV unit for early threat detection and easy redeployment.



[Learn More](#)



# CCTV Towers for Civil Engineering projects

## Instant Coverage for Large, Remote Sites

**Our Rapid Deployment CCTV Towers are purpose-built for infrastructure sites that are hard to secure. They provide live monitored coverage without needing power or internet, making them ideal for highways, bridgeworks, flood defences and remote compounds.**

Standing 7m tall and painted in high-visibility yellow, each tower acts as a strong visual deterrent. They are fitted with HD cameras, infrared sensors and live audio challenge capability, allowing threats to be identified and responded to in real time.

Towers can be powered by solar panels or fuel cells, depending on your site conditions. They are easy to reposition and can be deployed for short-term or multi-phase use.

Whether you're securing a stretch of road or a rural compound, WCCTV Towers provide fast, effective protection with full support included.



# What's Included with Our Fully Managed Service



## End-to-End Security, Handled by Experts

Managing security on a large, high-risk site is one more thing your team doesn't need on their desk. WCCTV provides a fully managed service that includes everything from installation and monitoring to maintenance, relocations and support.

We assess your site, install the equipment, configure the system and monitor it live through our NSI Gold Accredited partners. If something changes or stops working, we fix it fast. If the site layout evolves, we reposition the system.

No need to review footage, manage false alarms, or chase support. We handle it all — so your team can stay focused on the job without added distractions.

[Explore Our Managed Service](#)

# Site Security That Adapts to the Way You Build

## Flexible Security Without a Commitment

Infrastructure and civil engineering projects rarely stay in one place for long. Work areas shift, compounds move and security risks change from one phase to the next. That's why WCCTV offers a rental model that fits the way you build.

You can hire systems for short-term or long-term use, with no upfront investment and no responsibilities once the project ends. Most of our clients choose rental because it keeps things simple. There's no need to manage servicing, storage or future redeployment.

When your work is complete, we collect the equipment. If the next phase needs coverage, we are ready to deploy again with minimal delay. Rental gives you the flexibility to adapt your security.

[Get a Quote for Camera Rentals](#)



# Live Video Monitoring for Infrastructure Sites



## Real-Time Intervention That Stops Crime

**Our systems don't just record footage. They detect threats, trigger alerts and enable real-time intervention before damage or theft can occur.**

Each system uses motion detection to create a virtual perimeter. When movement is detected, an alert is sent to our NSI Gold Accredited monitoring partners. They dial in live, assess the site in real time, issue an audio warning and escalate the incident to police or site contacts.

How We Respond to Threats:

- Motion sensors detect movement
- Our operators verify the threat in real time
- Audio warnings are issued to challenge intruders

[Learn About CCTV Monitoring](#)



# Mobile Keyholding for Infrastructure Projects

## Site Attendance for Out-of-Hours Alerts

**When an alert is triggered out of hours, someone has to attend. WCCTV's mobile keyholding service ensures that responsibility doesn't fall on your site team.**

Our licensed keyholding partners respond quickly, access the site safely and follow agreed protocols to assess and manage the situation. Whether it's a confirmed threat, a triggered alarm or a site inspection request, you get a fast, professional response without having to send your own staff.

What Our Keyholding Service Includes:

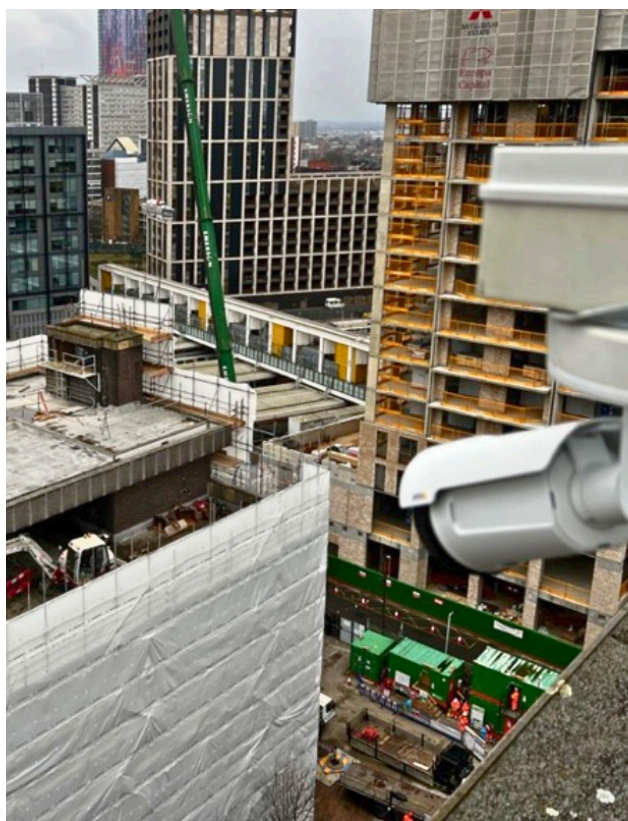
- Rapid response to verified threats
- Site access for police, contractors or emergency services
- Regular patrols on request & clear reporting

[Learn About Mobile Keyholding](#)





# Time Lapse Filming for Infrastructure Projects



## Capture Projects from the Ground Up

**Alongside our security systems, WCCTV offers professional time lapse filming to document your infrastructure project from initial groundworks through to completion.**

Our systems are installed quickly, require no fixed power or internet, and operate independently in even the most remote or challenging environments.

We've delivered time lapse footage for bridge replacements, highway upgrades, embankment works and environmental schemes.

Whether you're sharing progress with stakeholders, supporting ESG reporting or promoting your work to the public, our time lapse service delivers high-quality visual content with minimal effort from your team.

# Site Condition Monitoring That Keeps You Compliant

## Site Attendance for Out-of-Hours Alerts

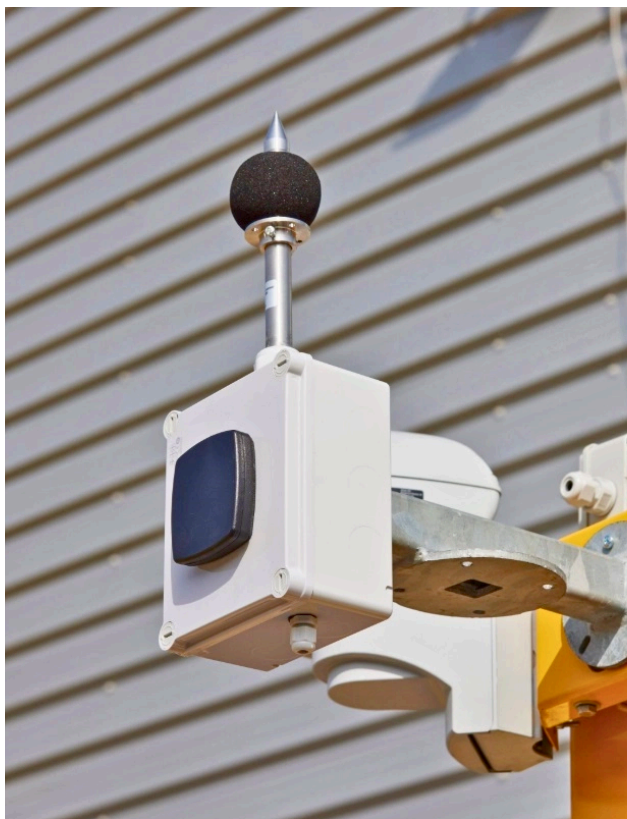
**WCCTV provides sensor-based monitoring solutions to help infrastructure contractors manage environmental risks, maintain compliance and reduce disruption.**

Our standalone units are ideal for use near homes, schools, watercourses or other sensitive areas where noise, dust and vibration must be closely monitored. The systems operate independently and deliver accurate, real-time data throughout the project.

What Our Keyholding Service Includes:

- Rapid response to verified threats
- Site access for police, contractors or emergency services
- Regular patrols on request & clear reporting

**Site Condition Monitoring**



# Why Choose WCCTV for Your Surveillance Solution

## UK's Most Established CCTV Tower Supplier

**WCCTV is the UK's original and most experienced supplier of rapid deployment CCTV towers.**

We don't resell third-party equipment or bolt together off-the-shelf kits. Every tower is developed in-house by our own engineering team and supported by a service model built around the needs of real sites in the UK.

Our product range is the most complete on the market, with tower variants for every power setup, environment and deployment type. From construction sites and infrastructure projects to public space monitoring and vacant property protection, our systems are trusted by hundreds of organisations across the UK.

Whether you need one tower or a full network, Wireless CCTV gives you proven technology, complete control and full-service support from a single provider.

Wireless CCTV Ltd  
James Watt House  
James Watt Drive  
Kingsway Business Park  
Rochdale, OL16 4UG

T: +44 (0) 800 470 4630  
E: [sales@wcctv.com](mailto:sales@wcctv.com)  
E: [support@wcctv.com](mailto:support@wcctv.com)

