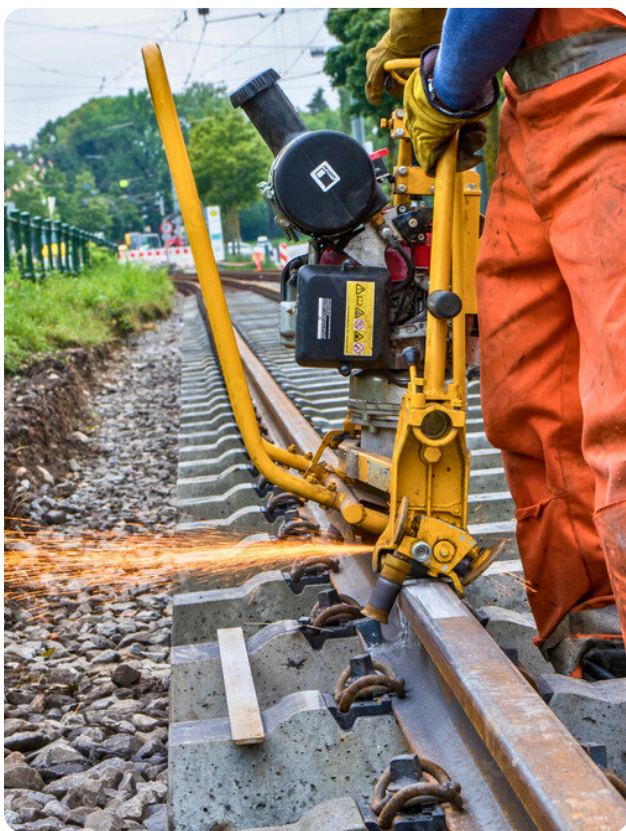


WCCTV



Trackside Equipment Security

How We Support Trackside Equipment



Tailored Solutions for Rail Environments

Trackside environments are among the most exposed and vulnerable locations on a rail project.

With high-value assets such as signalling equipment, cables, switchgear and portable chains in place, the risk of interference or theft is significant.

WCCTV's network rail approved CCTV Towers are built for trackside deployment and provide a strong visual deterrent and active monitoring to detect threats before damage occurs.

Our systems support safety, compliance and uninterrupted service delivery.

[Request More Info](#)

Network Rail WCCTV Tower

Trackside Approved Safety & Security

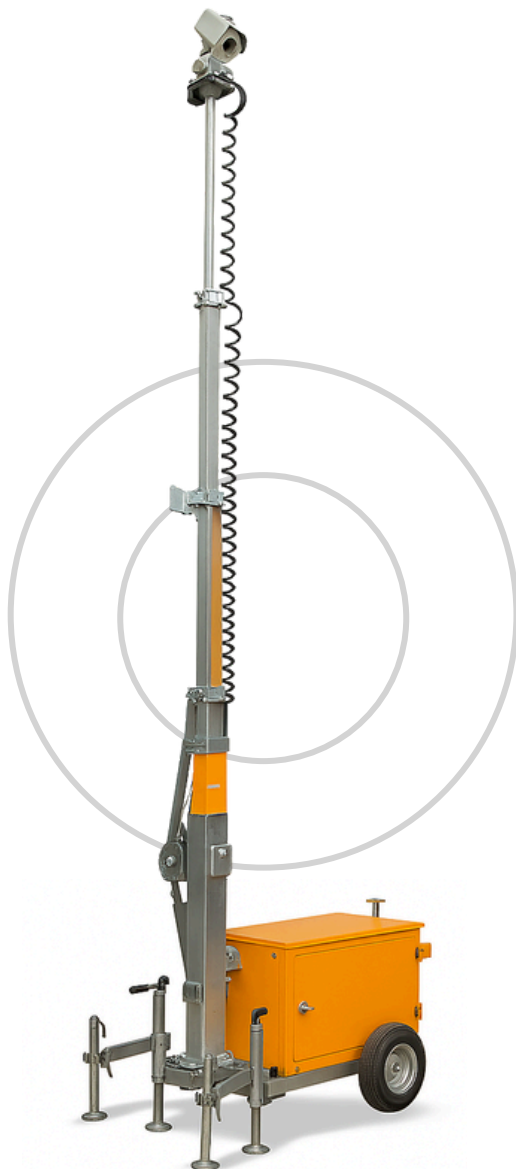
The WCCTV Network Rail Tower is a rapid deployment CCTV tower designed specifically for use on rail infrastructure projects.

Standing 7m tall and painted Network Rail orange, it features a PTZ camera mounted at height to provide a strong visual deterrent and full-site visibility.

Approved for trackside use by Network Rail (PADS Certificate: PA05/04778), the tower supports security, workforce safety, compound oversight and time lapse footage capture.

Key Features Include:

- Non-conductive mast and chassis for trackside deployment.
- Backed by advanced motion detection technology and live monitoring services.
- Save up to 88% on costs compared to employing physical guarding services.



Why Choose WCCTV for Your Surveillance Solution



The Trusted Choice for Rail Security

WCCTV has over 20 years of experience securing rail projects across the UK. We've worked directly with Network Rail and Tier 1 contractors during every Control Period, building a reputation for reliability, compliance and results.

Our systems are PADS approved, deployed by Sentinel-trained teams and backed by NSI Gold Accredited monitoring partners.

Every product is developed in-house to meet the demands of remote, high-risk and fast-moving rail environments.

From trackside equipment and depots to stations and compounds, we understand the challenges rail teams face and tailor our solutions accordingly.

With WCCTV you get more than a product. You get a fully managed service trusted by those delivering critical rail infrastructure.