

# WCCTV

## The Ultimate Guide to CCTV Towers



## 9 Key Features of CCTV Towers

Your CCTV tower specification sheet might list dozens of features, but only 9 really matter when criminals target your site:

**1** Rapid Deployment & Mobility

**2** Autonomous Design

**3** Scalability

**4** Remote Monitoring

**5** High-Definition Cameras

**6** Smart Intruder Detection

**7** Cloud Connectivity

**8** Smart Integrations

**9** AI-video Analytics



# Rapid Deployment and Mobility

Today's CCTV Towers can be installed and operational within **20 minutes** for basic setups.

Unlike fixed CCTV systems that require extensive building work, trenching and cabling, these self-contained units are quick to deploy wherever and whenever surveillance is needed.



They're designed to secure sites where fixed infrastructure is not available or practical, including the most inaccessible areas.

Mobile CCTV Towers can also be relocated as site layouts change or when security threats are on the rise. Standing **up to 6 metres** tall and painted bright yellow, our Towers create an unmistakable physical deterrent to criminals.



# Autonomous Design

With the UK working towards Net Zero by 2050, eco-friendly surveillance is more important than ever. Modern CCTV Towers are designed with sustainability in mind, operating completely independently of mains power or fixed broadband.



High-quality solar panels combined with methanol fuel cells and long-lasting batteries provide weeks of continuous coverage. Certain models, such as our Eco Towers, can even provide **up to 150 hours** of uninterrupted runtime between refills.

Housed in weather-resistant casings, the Towers' internal CCTV components are protected from the UK's harsh weather, guaranteeing day-to-night surveillance even in fully off-grid environments.

---

# Scalability

CCTV Towers allow you to scale security coverage without extensive trenching, cabling or permanent installation investments. You can add, remove or reposition units as your needs change, saving up to 88% compared to hiring security guards.

Save up to

**88%**

For larger sites, multiple towers work together to cover every angle. This scalability makes CCTV Towers suitable for anywhere, from small vacant car parks to major construction sites, large rail networks and other locations.



# High-Definition Cameras & Video Capabilities

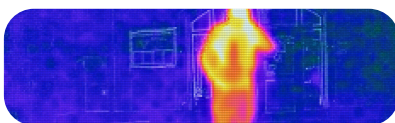
Advanced CCTV Towers often feature high-definition (HD) and 4K PTZ (Pan-Tilt-Zoom) security cameras that deliver **near-360° coverage**. This provides a complete site overview and covers blind spots that criminals could exploit.



## Advanced CCTV Camera Features Include:



Night Vision



Thermal Imaging



Multicam Dome



ANPR Cameras



Time Lapse Video



Smart Storage

# AI-Video Analytics

CCTV Towers with in-built artificial intelligence (AI) use machine learning to recognise normal patterns of site activity, such as worker movements and environmental changes. Over time, the system learns what counts as "normal" behaviour and can distinguish it from genuine security threats.

For instance, AI cameras can differentiate between someone scaling a fence and harmless movement caused by wildlife or swaying trees. This smart technology reduces false alarms and helps security teams focus on real threats in real-time.

- Facial recognition and object classification.
- Smart motion detection with false alarm filtering.
- Behavioural analysis to spot suspicious activity.
- Support for perimeter intrusion detection (PID) systems.

# Smart Intruder Detection

Advanced motion sensors and AI-video analytics work together to detect and deter unauthorised access by thieves, trespassers, vandals and squatters instantly. When intruders are identified, CCTV Towers automatically trigger:



Live Voice Down  
Audio Challenges



Blue Strobe  
Warning Lights



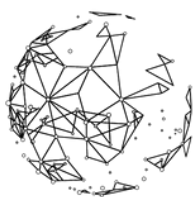
Sirens and  
Alarms



Real Time Alerts  
To Live Monitoring

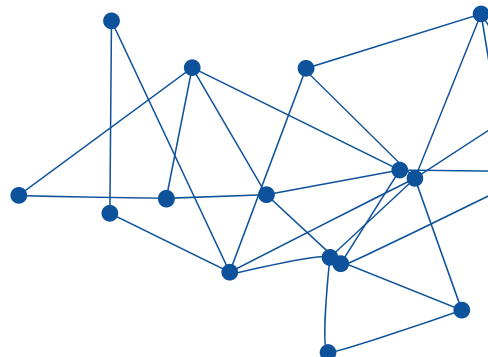
# Cloud Connectivity

Mobile CCTV Towers equipped with **secure 4G/5G networks** deliver live and recorded footage via end-to-end encrypted mobile networks. Our Stellifii cloud-based platform provides remote access to live camera feeds, recorded footage and system diagnostics from any device.



STELLIFII

Our Heartbeat software performs automatic system health checks remotely. If a fault is detected, our team begins troubleshooting immediately, with 90% of issues resolved from afar. The software is a standard inclusion across all our products and CCTV Towers for complete peace of mind.



# Smart Integrations

Modern CCTV Towers support various security and monitoring technologies such as:



Environmental  
Monitoring Sensors



Automatic Number  
Plate Recognition



Perimeter Intrusion  
Detection System

These integrations make CCTV Towers complete site management solutions, not just security devices. By combining surveillance with environmental monitoring, compliance tracking and advanced perimeter protection, they give site managers a single system for safeguarding.

---

# Remote Monitoring and Rapid Response

Most CCTV Towers installed by professional security suppliers connect to NSI Gold Accredited monitoring centres where trained personnel assess threats in real-time. When incidents occur, these security professionals initiate immediate actions such as:

- Live audio voice-down challenges
- Mobile keyholding team dispatch
- Direct emergency service notification
- Live incident documentation and reporting



All of our CCTV Towers include remote monitoring services, which are connected to NSI Gold Accredited facilities. When security breaches are detected, they are immediately attended to without burdening you or your operations team, even during out-of-office hours.

-----

## 8 Benefits of CCTV Towers

Features tell you what CCTV towers can do. Benefits tell you what they actually achieve for your business:

### Crime Deterrence

Mobile CCTV Towers deter theft, vandalism and anti-social behaviour with high visibility and rapid response.

### Cost-Effectiveness

These units cut costs, reduce insurance premiums, run on solar power, and prevent downtime with remote monitoring.

### Rapid Deployment

Rapid Deployment Towers suit any site, from construction to public spaces, and can be easily redeployed.

### Versatility

Advanced cameras and AI deliver all-weather coverage, while remote health checks keep sites reliably protected 24/7.

## 8 Benefits of CCTV Towers

Features tell you what CCTV towers can do. Benefits tell you what they actually achieve for your business:

### Power Independence

Solar CCTV Towers cut emissions, remove electricity costs, and deliver up to 20 weeks of autonomous protection.

### Evidence Collection

Professional cameras capture prosecution-ready footage, with all recordings managed securely and GDPR compliant.

### Continuous Monitoring

CCTV Towers deploy in 20 minutes, run fully off-grid, and relocate easily for instant, flexible protection.

### Regulatory Compliance

CCTV Towers meet UK compliance, with monitoring that supports GDPR, Data Protection and ESG regulations.

# 10 Use Cases of Mobile CCTV Towers

Available for short- or long-term deployment, our mobile CCTV Towers are ideal for virtually any location, such as:



**Click to learn more about how we improve security in your sector.**

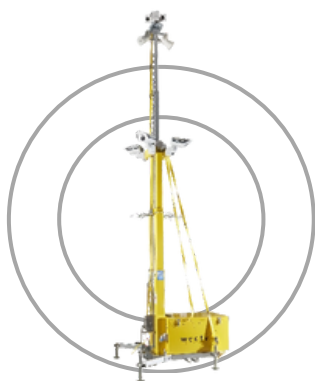
---

# How Modern CCTV Towers Compare to Traditional

Overview of how modern CCTV Towers compare to traditional systems:

Feature	WCCTV Towers	Traditional CCTV
<b>Installation</b>	20 minutes	Days to weeks
<b>Power Requirements</b>	Solar, fuel cell & battery autonomy	Mains power
<b>Internet Connectivity</b>	4G/5G wireless	Fixed broadband
<b>Mobility</b>	Easily relocatable	Permanent installations
<b>Coverage</b>	Near-360°	Limited fixed angles
<b>Monitoring</b>	24/7 remote monitoring	Recording only
<b>Response</b>	Immediate action	None
<b>Maintenance</b>	Remote diagnostics & support	On-site maintenance
<b>Cost</b>	Flexible rental options	High upfront investment

# Our Range of Mobile CCTV Towers



**Eco Tower**

The Eco Tower is a mobile CCTV unit designed for sites looking to reduce generator use, fuel consumption and external noise.



**Learn More**

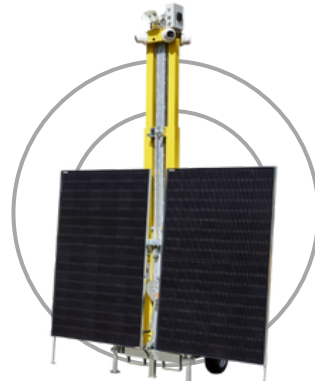


**Solar Fuel Cell Tower**

The Solar Fuel Cell Tower is a self-powered CCTV unit for remote sites, running without mains power or generators.



**Learn More**



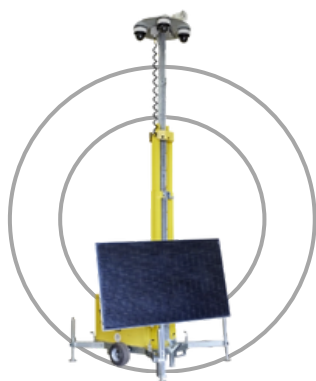
**Thermal Solar Tower**

This solar-powered CCTV system combines thermal and optical cameras with onboard analytics to detect and deter intrusions.



**Learn More**

# Our Range of Mobile CCTV Towers



**Smart Tower**

The Smart Tower is a mobile CCTV system built to provide complete compound-level coverage from a single unit.



**Learn More**

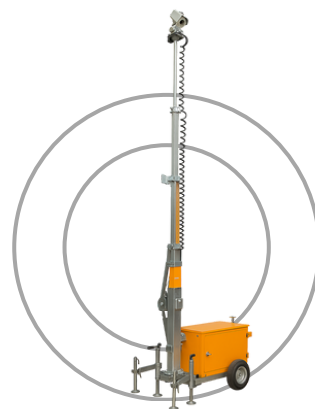


**Traffic Tower**

The Traffic Tower is a mobile CCTV system designed specifically for highways and carriageway environments.



**Learn More**



**Network Rail Tower**

These units are specifically designed to provide video monitoring and security for trackside, level crossing and depot applications.



**Learn More**

# Contact Us

Wireless CCTV Ltd  
James Watt House  
James Watt Drive  
Kingsway Business Park  
Rochdale, OL16 4UG

T: +44 (0) 800 470 4630  
E: sales@wcctv.com  
E: support@wcctv.com

