

WCCTV

Construction Site Safety: The Importance of Data Visibility

7 Reasons Why Real-Time Data Visibility Matters in the Construction Industry

Data visibility means having instant access to up-to-date information about what's happening across all building sites. It isn't based on last week's summary or a report someone forgot to send, but rather live data, available when you need it. Here's why that matters and makes a big difference for the construction industry:



Improved Decision-Making:

Site teams make better decisions when they notice incidents or compliance gaps as they unfold. No second-guessing; they see the problem and act on it instantly.



Project Predictability:

Schedule tracking and monitoring progress become easier when data is presented in a single view. Instead of waiting days for progress updates, real-time visibility allows project managers to spot delays early and adjust resource allocations to keep construction projects on track.



Team Alignment:

Fragmented data opens doors for miscommunication between teams. When site managers and safety officers work from one dashboard, communication naturally improves as they use the same up-to-date information.

7 Reasons Why Real-Time Data Visibility Matters in the Construction Industry



Risk Management:

Site safety risks can escalate in an instant, and they don't wait for your next scheduled inspection to occur. Real-time visibility lets you monitor worker safety and air quality readings as conditions change, allowing you to step in long before injuries or fatal accidents take place.



Cost Control:

On-site mishaps are costly, from incident claims and compliance penalties to project delays. Better visibility helps you catch issues before they escalate into shutdowns or HSE investigations. And paying multiple vendors for overlapping tools simply isn't financially viable.



Regulatory Compliance:

HSE regulators expect recorded evidence of safety measures and continuous monitoring, and audits are far easier when live and historical data are accessible.



Positive Reputation:

Firms with strong safety visibility show proactive risk management, build stakeholder trust, and reinforce a reliable, safety-first reputation.

How Smarter Monitoring Systems Outperform Traditional Methods

Traditional site monitoring can't keep up with modern construction. Periodic inspections, paper logs and reactive reporting made sense when construction sites were smaller, and regulators expected less from project teams. Here's a quick overview of how smart monitoring, with real-time data visibility, outweighs outdated legacy systems:

Feature	Smart Monitoring	Traditional Methods
Data Access	Live, 24/7, from any device	Delayed; relies on manual input
Incident Logging	Instant timestamped site data	Manual, prone to human error
Compliance Evidence	Always audit-ready	Delayed; project managers manually compile site data from multiple sources
Risk Detection	Proactive; pattern-based	Reactive; after incidents occur
Multi-Site Visibility	Centralised dashboards for multiple sites	Fragmented, siloed data
False Alarm Filtering	AI-powered threat detection filters false alarms with near-pinpoint accuracy	High false alarms risk
Admin Burden	Minimal	Extensive

The Technology Enabling Better Data Visibility in UK Construction

So, what does good data visibility in construction site safety look like in action? It starts with the right technology:

Rapid Deployment Surveillance:

CCTV Towers and Temporary CCTV solutions provide 24/7 site coverage across large, complex building sites. Standing up to 6 metres tall with a near-360° field of view, they actively capture everything that happens on-site.

When connected to professional remote monitoring services at NSI Gold Accredited monitoring facilities, footage is reviewed live and actions are triggered immediately (voice down challenges, mobile keyholding dispatch, etc.). This level of surveillance eliminates blind spots and transforms site activity into actionable insights, giving safety managers full visibility at all times.



6 Metres Tall



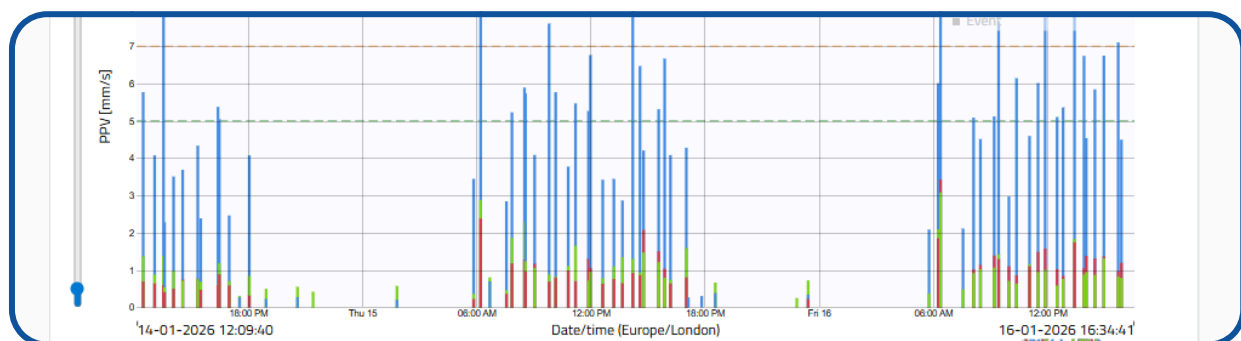
The Technology Enabling Better Data Visibility in UK Construction

AI-Video Analytics:

Intelligent software uses machine learning and artificial intelligence (AI) to analyse footage continuously. Systems distinguish genuine safety threats from false alarms, timestamp each event and create searchable logs without human intervention.



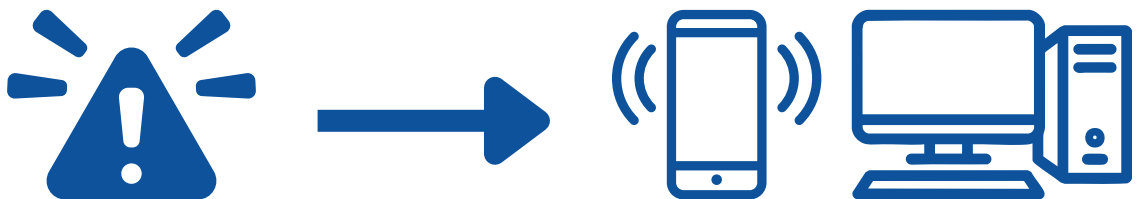
Integrating seamlessly with our CCTV Towers and Redeployable Cameras, smart AI-powered systems give construction professionals a complete visual record of site activity, accessible in minutes.



The Technology Enabling Better Data Visibility in UK Construction

Real-Time Alerts:

Real-time alerts enhance visibility in the construction industry by turning raw video feeds into actionable notifications and insights. When site teams receive instant alerts, whether from a PPE violation or a perimeter breach, they can make more informed decisions and implement preventive measures/corrective actions before small issues become significant problems.



The Technology Enabling Better Data Visibility in UK Construction

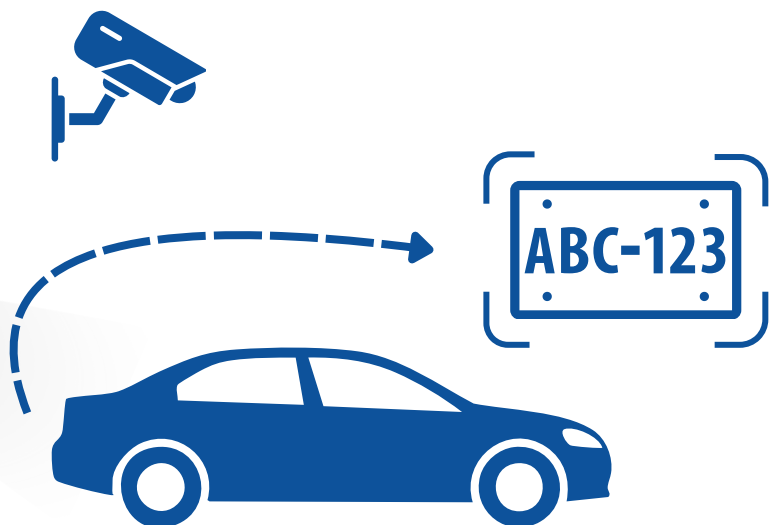
Smart Detection Systems:

Safety managers cannot be everywhere at once, especially across multiple sites. Smart detection devices close that visibility gap. By automatically identifying PPE violations, intrusions and smoke/fire hazards, these add-on features catch safety issues in high-risk areas without human involvement.



Advanced Access Control:

Automatic Number Plate Recognition (ANPR) logs all vehicle movement on site. It captures (and timestamps) entry and exit times to create a clear digital trail for internal reviews, police investigations and external audits.



The Technology Enabling Better Data Visibility in UK Construction

IoT Technology:

Environmental solutions with Internet of Things (IoT) tech track various atmospheric metrics that cameras can't capture, storing up to **180,000** timestamped logs for trend analysis:



Noise sensors track noise levels (30-130 dB), ensuring sites are fully compliant with Section 61 industry standards.

180,000

TIMESTAMPED LOGS



Air quality sensors monitor particulate matter, CO₂ and VOCs for ESG and Control of Substances Hazardous to Health Regulations (COSHH) compliance.



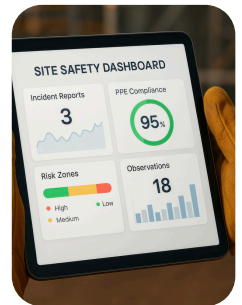
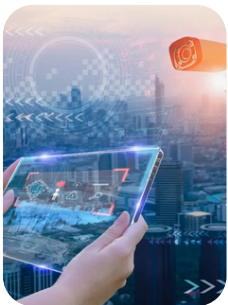
Weather monitoring systems provide live data on wind, temperature, humidity and rainfall. This information allows project management teams to make more informed decisions about worker safety on-site.



The Technology Enabling Better Data Visibility in UK Construction

Unified Dashboards:

Stellifii streams all the above into a single, AES256-encrypted dashboard. Surveillance, environmental data, safety protocols, smart detection logs and incident reports all live in one place, giving teams a clear, consolidated view of construction safety and ensuring audit readiness, even when inspectors arrive unannounced.



On top of this, integrated monitoring generates reports up to **5X quicker than legacy systems**, freeing health and safety officers from hours of manual work.

**5x Quicker
than legacy systems**

5 Best Practises for Improving Construction Visibility

Smart technology is only part of the solution to enhanced visibility across your business. Here are 5 quick steps you can take to improve safety for current and future projects:

1

Consolidate Monitoring Systems: Replace fragmented tech with a single platform unifying surveillance, site data and access control.

2

Automate Data Capture: Manual entry causes gaps and errors; smart software logs events automatically with timestamps and video.

3

Set Alert Thresholds: Define when alerts will be issued: PPE violations, environmental spikes and/or access control issues.

4

Review Data Regularly: Visibility means nothing if no one checks the data. Schedule daily/weekly reviews to spot trends, identify problem areas and track improvements.

5

Train Your Teams: Make sure project managers and site teams know how to access live dashboards, interpret data and act on real-time insights.

Contact Us

Wireless CCTV Ltd
James Watt House
James Watt Drive
Kingsway Business Park
Rochdale, OL16 4UG

T: +44 (0) 800 470 4630
E: sales@wcctv.com
E: support@wcctv.com

