

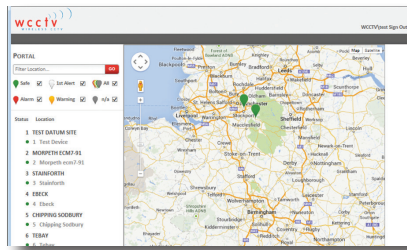
WCCTV Remote Condition Monitoring

Wireless CCTV is a market leading provider of rapidly deployable, portable surveillance systems. The systems operate over wireless technologies including 4G and 3G mobile phone networks, as well as satellite, Wi-Fi and broadband technologies. This makes the systems ideal for redeployable solutions in temporary, mobile or semi permanent situations.

WCCTV Remote Condition Monitoring

WCCTV's Remote Condition Monitoring Solution has been developed through a close working relationship with Network Rail, and in response to the growing demand for a cost-effective and reliable solution for monitoring remote sites and assets. The system provides a complete wrap-around solution for detection, early-warning and monitoring of flooding, landslips and other hazardous conditions.

The system allows users to monitor and receive video and alerts from remote locations through a customised and secure web-portal. Cameras operate over mobile networks including 4G, 3G or Wi-Fi where available, or satellite where not.



When deployed as a flood detection solution, changes in local water levels are indicated by wireless triggers which send an alert to the end user with video footage of site conditions.

The flood warning system relays real-time information 24 hours a day (or as directed by the customer) to a centralised location, and can send alerts by email or text when a change in the environment is detected.

The secure web-portal can automatically take snapshot pictures on a daily basis for reference as required, and live monitoring can be accessed at any time via smartphone, laptop, tablet or computer as authorised by the customer.

The system requires little-to-no maintenance, and is powered by renewable energy sources (wind/solar).

For further details on WCCTV's Remote Condition Monitoring Solution please contact our sales offices:-

Head Office:

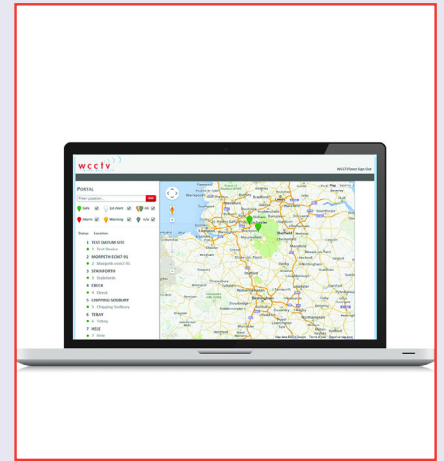
Wireless CCTV Ltd
Charles Babbage House,
Kingsway Business Park,
Rochdale,
OL16 4NW
t: +44 (0) 1706 63 11 66
f: +44 (0) 1706 63 11 22
e: sales@wcctv.com
w: www.wcctv.co.uk

Southern Office:

Wireless CCTV Ltd
Unit 3,
Scott Road,
Luton
LU3 3BF
t: +44 (0) 1442 26 00 74
f: +44 (0) 1706 63 11 22
e: sales@wcctv.com
w: www.wcctv.co.uk



INVESTORS IN PEOPLE™
We invest in people Gold



Features & Benefits

- Rapidly deployable and easy to install
- Customised and secure web portal allows viewing of any number of remote sites and status alerts
- Alerts delivered by email or text to any recipient
- Snapshot updates provided on a daily basis or as required
- Remote access to live video via smartphone, tablet or laptop
- Access to full technical support
- 4G, 3G HSUPA, 3G HSDPA, Wi-Fi and satellite

Possible Applications

- Flooding detection
- Landslip detection
- Monitoring of remote assets
- Bridge Strikes