

WIRELESS CCTV

Rail Solutions



Wireless CCTV



WCCTV is a leading supplier of remote access CCTV and remote condition monitoring systems to the rail industry. WCCTV's product portfolio covers a wide range of applications for both trackside and non-trackside deployments.

WCCTV's products are specifically designed for rail environments, meeting the needs of the Company's diverse range of rail clients – which includes Network Rail, TFL (London Underground and London Overground), Train Operating Companies, Freight Operating Companies & multiple rail contractors.

Our systems have been instrumental in reducing delay minutes, improving safety measures, protecting remote sites and assets, providing real time video, data and alerts to assist with strategic and critical decisions.



Wireless CCTV's solutions are extremely cost effective and can be fully integrated into a CCTV monitoring control room or they can be used as stand-alone solutions accessed via multiple platforms and devices.



WCCTV 4G IR Speed Dome

WCCTV's 4G IR Speed Dome is a redeployable CCTV system specifically designed to deliver HD video (up to 1080p) via 4G, 3G and wireless networks at speeds up to 25 frames per second with zero latency and full PTZ responsiveness.

As a true redeployable CCTV system, it combines a market-leading infrared PTZ camera, local recording capability (up to 4TB) and wireless transmission technology into a single, portable and easy to install unit.

Its 2MP PTZ camera features 360° movement, 20x optical and 16x digital zoom, infrared capability (up to 50m) and ultra-low light capability.

The system also contains inbuilt video analytics, delivering detection, visual verification and email alarms for a range of monitoring applications. It also contains inbuilt autotracking capability for intelligent video monitoring.

Its additional video input channels allow for the integration of secondary cameras (such as NPR cameras) or accessories.

Features and Benefits

- Remote access to live and recorded video via 4G, 3G and Wi-Fi
- Full remote configuration
- Up to 50m IR illumination
- Inbuilt video analytics and auto-tracking capability
- ONVIF compatible
- HD images (up to 1080p) delivered over mobile networks



WCCTV Network Rail Type Approved Tower (PADS Number PA05/04778)

The WCCTV Network Rail Type Approved Tower is rapid deployment CCTV tower that has been specifically designed to provide video surveillance for trackside, level crossing and depot applications.

It is the only rapid deployment CCTV tower with PADS approval for trackside deployment.

The system combines wireless transmission (via 4G/3G/Wi-Fi) of live and recorded video and alarms, a market leading PTZ camera with infrared imaging and 360 degree pan, tilt and 36x zoom, audio speakers to enable a remote challenge to occur and a removable hard drive for video storage.

It can be installed and fully-operational in just a matter of minutes ensuring your sites are protected, making it an ideal solution for temporary or mobile applications.

Powering options include:

- Mains – 110/240v
- Eco long-run 150hr battery - allowing generator shutdown at nights/weekends
- Methanol fuel cell - autonomous power for up to 10 weeks
- Renewable sources (wind/solar)

It can be provided as a standalone solution or as part of a managed service pack - including survey, installation, monitoring, maintenance, redeployment and 3rd party key holder escalation.

The Network Rail Tower is available for sale or on a rental basis.

Features and Benefits

- The only Network Rail PADS approved CCTV tower
- Wireless detectors provide an invisible perimeter
- Industry-leading ruggedised PTZ camera with IR capability as standard
- Multiple powering options for optimum flexibility
- Battery back-up activated and alarm raised on power disconnection
- Audio functionality
- Low battery alerts
- GPS location information
- 4TB local recording
- Shock, vibration and tilt alerts
- 4G, 3G, GPRS, Wi-Fi and IP connectivity
- Remote access to evidential recorded digital footage
- On-going health check, alert raised on camera failure, camera masking, hard drive failure or hard drive nearing capacity

Wireless CCTV



WCCTV Body Worn Camera (Record)

WCCTV's Body Worn Camera (Record) is designed and manufactured in the UK, and boasts a range of market-leading functionality.

With resolutions of up to 1080p, and all recordings capturing vital metadata such as date, time, device number and user details, you can be assured of evidential integrity.

The unit contains inbuilt Wi-Fi capability to provide live video transmission and wireless downloading of footage when in range, and the functional design of the device lends itself to ease of use - with a simple one-button record mechanism.

Its 2.8" front-facing screen is proven to reduce conflict and aggression, and the 120 second pre-event recording buffer ensures incidents are not missed.

Features and Benefits

- In-built Wi-Fi capability
- Up to 17 hour battery life
- Local recording up to 128GB providing
- Durable housing - IP65 rated



WCCTV Body Worn Camera (Connect)

The multi-award-winning WCCTV Body Worn Camera (Connect) provides live transmission of video, two way audio, real-time alerts and GPS information via 4G, 3G and Wi-Fi connectivity.

This enables the remote connection to a body worn camera in the field, allowing an operator to view live video, communicate with the wearer and understand their position via GPS.

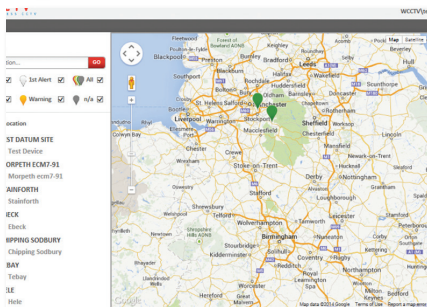
Alternatively, the wearer of the device can send an alert back to a control room, monitoring station or command centre with their live video, GPS location details and a request for assistance.

The WCCTV Body Worn Camera (Connect) is a single unit, with no external cables, battery packs, transmission units or tethering.

Features and Benefits

- Live transmission via 4G LTE and Wi-Fi
- Reduce requirements for site visits
- Improved safety for lone workers
- Multiple health and safety applications

4G



WCCTV Remote Condition Monitoring

WCCTV's Remote Condition Monitoring Solution provides a complete solution for detection, early-warning and monitoring of flooding, landslips and other hazardous conditions.

Users can receive video, images and alerts from remote locations through a customised and secure web-portal. The cameras transmit over mobile networks including 4G/3G/Wi-Fi where available, or satellite where not.

Changes in environmental conditions are indicated by wireless triggers which alert the user with video footage of site conditions. The system relays real-time information 24 hours a day (or as required) to a centralised location. Live monitoring can be accessed at any time via smartphone, laptop, tablet or computer.

The system requires little-to-no maintenance, and is powered by renewable energy sources (wind/solar).

Possible Applications

- Flood and landslip detection
- Monitoring of remote assets
- Bridge strikes



Time Lapse Video Production

WCCTV provides Time Lapse Video production services for construction or upgrade projects, either as a standalone service or as an addition to our security services.

We can provide time lapse video cameras without the need for on site infrastructure or installations work, meaning we can capture video where others can't.

We will also provide you with a login to WCCTV's time lapse portal, where you can review images and footage, download progress videos and even embed the live stream into your websites.

On completion of your projects, we will provide a fully-edited video for use across all your digital platforms.

Features and Benefits

- Any project length, see your projects come to life
- Showcase your projects and celebrate the achievements of your teams
- Ideal for presentations, websites, and social media
- Communicate with stakeholders and senior management and drive public engagement
- High PR value
- Project management value - review your efficiency

Case Study - Great North Rail Project

Network Rail's Great North Rail Project is a vast programme of improvements to transform train travel for customers in the North.

WCCTV were contracted by Babcock International, working on behalf of Network Rail, to provide a number of wireless video solutions for an upgrade project in Newcastle.

Services WCCTV provided for the project included live remote video feeds for project overview, site security services, time lapse video and multiple body worn cameras.

The site utilised five WCCTV Network Rail Type Approved Towers - the only rapid deployment CCTV Tower with PADS approval for trackside deployment.

The video footage from the Towers was used for project overview, health and safety and for security applications - helping to protect valuable assets.

As WCCTV's wireless video systems are all 'Time Lapse Video Ready', we were able to provide Network Rail with a fully edited HD video at the end of the project to use across their digital platforms.

Finally, WCCTV's Body Worn Cameras were used on site for workforce protection, track inspections, recording activity for training and review and for security.



"WCCTV's technology allows for live video feeds to be accessed from any location enhancing our existing safety practices. I've found the systems easy to deploy and use, and I've been very happy with the ongoing support I've received from WCCTV."

Network Rail



To find out more about any WCCTV products & services or to arrange a live demonstration please contact one of our UK offices:

Head Office:

Wireless CCTV Ltd
Charles Babbage House,
Kingsway Business Park,
Rochdale,
OL16 4NW

t: +44 (0) 1706 63 11 66
f: +44 (0) 1706 63 11 22
e: sales@wcctv.com

Southern Office:

Wireless CCTV Ltd
Unit 3,
Scott Road,
Luton,
LU3 3BF

t: +44 (0) 1442 50 30 00
e: sales@wcctv.com



www.wcctv.co.uk
sales@wcctv.com



INVESTORS IN PEOPLE™
We invest in people Gold

