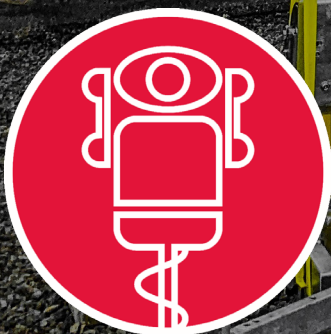


wcctv
WIRELESS CCTV

WCCTV Managed Services

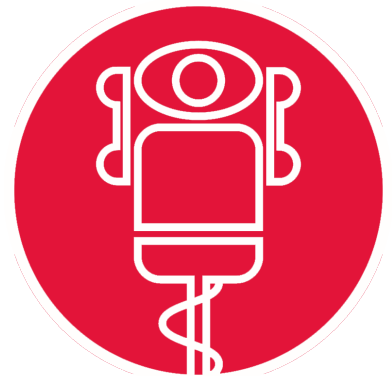


www.wcctv.co.uk

WCCTV Managed Services

WCCTV is the UK's leading provider of rapid deployment CCTV Towers, specifically designed to provide all-in-one site security for temporary sites such as construction, demolition and highways infrastructure projects.

We pride ourselves on our market-leading position, supplying our own manufactured product and a service which starts at site survey, right through to installation, maintenance, alarm response and monthly reporting, detailing onsite events and speed of action from the WCCTV team.



WCCTV Redeployable Domes

WCCTV's Redeployable Domes are all-in-one surveillance systems that combine local recording, wireless transmission and an industry leading pan, tilt and zoom camera into one compact and portable unit.

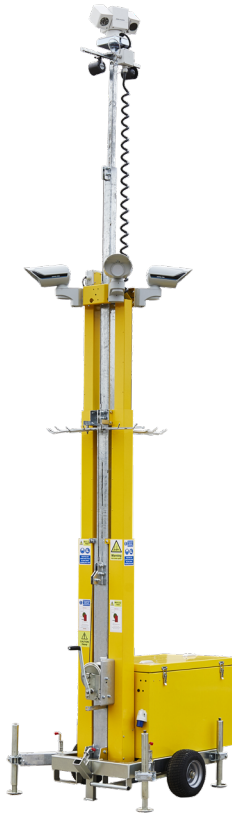
Transmission options include 4G, 3G and Wi-Fi, allowing users to access live and stored images remotely via mobile viewing devices (smartphone, tablet, laptop and PC) or via a monitoring centre.

The systems are ideal for temporary, mobile or permanent applications including project overview, health and safety, asset monitoring, metal and cable theft, trespassing and vandalism.

Features and Benefits

- Rapid redeployable
- Up to 50m IR illumination
- Inbuilt video analytics and auto-tracking capability
- Compact one-box solution
- Remote control with full pan, tilt and zoom functionality
- Remote access to live and recorded digital footage
- 360° field of vision
- 4G, 3G and Wi-Fi connectivity
- High Definition (upto 1080p)
- Covert systems available

4G



WCCTV Site Tower

WCCTV's Site Tower is a Rapid Deployment CCTV system designed to provide complete security for construction sites, utility sites or any location where temporary monitoring is required.

The 7m tall, bright yellow Site Tower provides a highly-visible deterrent, helping to prevent trespass and intrusions on to sites.

As an all-in-one surveillance solution, the system contains wireless transmission (4G/3G/Wi-Fi) of video and alarms, a heavy duty infrared PTZ camera to allow a remote operator to capture images of any intruder, audio speakers to enable a remote challenge and local recording capability.

The WCCTV Site Tower can be installed and fully-operational in just a matter of minutes ensuring your sites are protected.

Its flexible methods of powering make it suitable for deployment in even the most remote locations, without the requirement for any supporting infrastructure. Powering options include:

- Mains - 110/240v
- Eco long-run 150hr battery - allowing generator shutdown at nights/weekends
- Methanol fuel cell - autonomous power for up to 10 weeks
- Renewable sources (wind/solar)

Its multiple motion detectors, audio speakers backed by high-end alarm monitoring and response effectively eliminate the need for costly manned-guarding, reducing security costs by up to 86% without compromising on quality or reliability.

The WCCTV HD Site Tower can be provided as a standalone security system or as part of a fully-managed security and site monitoring solution which includes survey, installation, monitoring, maintenance, redeployment and 3rd party key holder escalation.



Wireless CCTV



Features and Benefits

- Proactive site protection and monitoring
- Complete managed service options
- Up to 86% cheaper than manned-guarding
- Wireless detectors provide an invisible perimeter
- High Definition PTZ with directional IR
- Multiple powering options for optimum flexibility
- Battery back-up activated and alarm raised on power disconnection
- Audio challenges
- Low battery alerts
- GPS location information
- Shock, vibration and tilt alerts
- 4G, 3G, GPRS, Wi-Fi and IP connectivity
- Remote access to evidential recorded digital footage
- Ongoing health check, alert raised on camera failure, camera masking, hard drive failure or hard drive nearing capacity
- Second camera output for HD Time Lapse Video production



WCCTV Body Worn Video

WCCTV's Body Worn Cameras lead the market in terms of features and functionality, technical capability and ease of use for the wearer and video manager.

WCCTV's range of body worn cameras include the WCCTV Body Worn Camera (Connect) and the WCCTV Body Worn Camera (Record). The WCCTV Body Worn Camera (Connect) is a multi-award-winning body worn camera offering live transmission of video, audio, real-time alerts and GPS information via 4G/3G and Wi-Fi connectivity.

Unlike other live transmission body worn camera systems, the WCCTV Body Worn Camera (Record) captures audio and video on the move. With High Definition playback and all footage date, time and GPS location stamped - to be sure of evidential integrity of all footage recorded.



WCCTV Time Lapse Video

WCCTV provides high-quality Time Lapse Video production services for construction and demolition works, including highways and utilities infrastructure projects.

WCCTV will create a time lapse video based on your specifications. Let us know the key elements of your project including your objectives, milestones and working hours, and we will ensure you receive a stunning time lapse video.

Unsure of what you're looking for? Our time lapse video experts can provide guidance on how to bring your construction, demolition or refit project to life!

WCCTV's time lapse video cameras can be integrated into a WCCTV HD Site Tower as part of WCCTV's managed site security services, or just as standalone solution.

Throughout your project, you will have access to WCCTV's time lapse portal, where you can review images and footage, download progress videos and even embed the live stream into your websites.

If your business is looking for a proven method of generating publicity, PR and new business, Time Lapse Videos are the perfect option. Videos we've produced have been featured on the BBC, ITV, on national newspaper websites and by multiple leading industry websites.

We can provide time lapse video cameras that do not require any additional onsite infrastructure, installation work, power sources or connectivity - meaning we can capture video where others can't.

WCCTV Heartbeat

WCCTV's Heartbeat diagnostic service ensures the correct operation of your WCCTV systems by remotely checking the health status of the cameras.

It is a comprehensive health, status and operation checking application that automatically detects any issues with your system - allowing for swift corrective action to be taken.

The system can detect loss of power, intermittent connections, hard disk failures, recording issues and time and date inaccuracies.



Case Study - ATC Systemwide Crossrail

ATC Systemwide is a joint venture between Costain, Alstom and TSO who have been contracted to fit out and commission the tunnels bored under the streets of London that form part of the Crossrail project.

They required ongoing site security at three of their main construction sites, Plumstead, Pudding Mill Lane and Westbourne Park. Given the complex nature of the sites, the ongoing changes to the working environment and a lack of onsite power, hard-wired CCTV was not an option.

To meet ATC Systemwide's requirements, WCCTV deployed two WCCTV Fuel Cell Site Towers at each of the three sites to provide full perimeter protection, and to ensure any intruders were picked up at the first point of ingress.

As the sites developed and power was made available, WCCTV were able to replace the two Fuel Cell Towers at Plumstead with WCCTV Site Towers (mains powered), and the two Fuel Cell Towers at Westbourne were replaced with two WCCTV Eco Site Towers (temporary generator power).

Throughout the works, ATC Systemwide's sites and assets were fully protected, even whilst there was no power on site. WCCTV's Fuel Cell Towers provided round-the-clock security, at a fraction of the price of manned-guarding.



"WCCTV provided me with a flexible, quality solution to a challenge that I had at remote, but high risk and high value sites.

They worked with me to provide cameras that had a range of capabilities, were low maintenance but very effective.

I would have no hesitation in working with WCCTV again."

ATC

To find out more about WCCTV's Managed Services or to arrange a free trial please contact one of our UK offices:

Head Office:

Wireless CCTV Ltd
Charles Babbage House,
Kingsway Business Park,
Rochdale,
OL16 4NW

t: +44 (0) 800 470 4630
e: sales@wcctv.com

Southern Office:

Wireless CCTV Ltd
Unit 3,
Scott Road,
Luton,
LU3 3BF

t: +44 (0) 800 470 4630
e: sales@wcctv.com

