

WIRELESS CCTV

Traffic Surveillance Solutions



Wireless CCTV



Wireless CCTV (WCCTV) is a market leading provider of portable, redeployable mobile surveillance solutions specifically designed operate over multiple wireless networks to meet every circumstance, including 4G, 3G, GPRS and satellite networks.

WCCTV's wide-range of rapid deployment CCTV systems are used extensively by companies responsible for managing road networks for multiple applications.

WCCTV's Rapid Deployment CCTV Towers provide a convenient solution for monitoring temporary road works and traffic construction projects in remote locations.



Companies responsible for road maintenance and construction have fitted front-line staff with WCCTV Body Worn Cameras to assist with personal safety and protection, as well as to offer an overview of health and safety practices.



WCCTV 4G IR Speed Dome

WCCTV's 4G IR Speed Dome is a Redeployable CCTV system specifically designed to deliver live and recorded HD video via 4G transmission.

The system combines an infrared PTZ camera, local recording capacity (up to 4TB) and wireless transmission technology into a single, lightweight unit.

The system is easy to install, easy to maintain, and can be moved to new locations to meet changing requirements.

Live and recorded footage can be accessed via 4G, 3G and Wi-Fi connectivity, allowing users to remotely view and download the video via smartphone, tablet, laptop or PC or via integration to an existing control room.

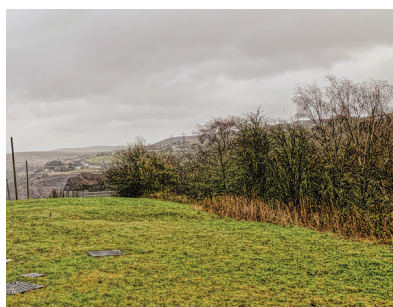
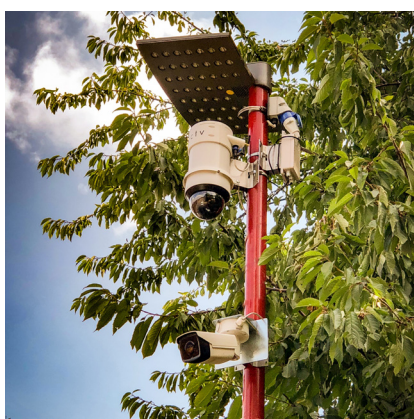
The system contains inbuilt video analytics functionality to provide visual verification and email alarms for a range of intelligent surveillance applications, and inbuilt autotracking functionality for automated monitoring.

The unit features three additional input channels, allowing the addition of secondary cameras such as NPR cameras, and the addition of accessories such as the WCCTV Smart Switch and the WCCTV Wi-Fi Download Accelerator.

Features and Benefits

- Remote access to live and recorded video via 4G, 3G and Wi-Fi
- Full remote configuration
- Up to 50m IR illumination
- Inbuilt video analytics and auto-tracking capability
- ONVIF compatible
- HD images (up to 1080p) delivered over mobile networks

Leading mobile surveillance for over 10 years



WCCTV 4G IR Speed Dome with NPR

WCCTV's combined NPR and Redeployable CCTV system utilises the additional output channels of a WCCTV 4G IR Speed Dome to integrate a specialised High Definition Number Plate Recognition Camera.

This unique all-in-one rapid-deployment surveillance system combines all of the benefits of truly redeployable CCTV with advanced NPR technology.

The system harnesses the wireless transmission (4G/3G/Wi-Fi), local recording (up to 4TB) and 360° PTZ field of vision of the WCCTV Speed Dome range to provide a complete situational overview, while the NPR camera delivers crystal-clear images of number plates in all weather and lighting conditions.

The WCCTV Speed Dome + NPR is ideal for strategic data collection along roadways, bridges, tunnels, key road junctions, entrances to buildings or other critical infrastructure. It is also an ideal crime fighting tool against fly-tipping, parking offenses, traffic violations and more.

Features and Benefits

- High speed, high accuracy number plate recognition
- Full day and night operation
- All weather conditions operation
- Complete situation overview
- Portable and rapidly deployable

WCCTV Video Analytics

The inbuilt analytics functionality on the WCCTV 4G IR Dome provides high performance intrusion detection using video analytics specifically designed for 24/365 outdoor operation.

Optimised using thousands of hours of video footage covering a range of environmental, seasonal and time of day variations, the analytics achieve low false alarm rates while maintaining high detection probability and reliability. With simple "region of interest" configuration for a majority of scenes, it can be adapted to a wide range of applications.

Features and Benefits

- One-person setup, remote commissioning
- Up to 16 detection zones per channel (4)
- Fast and easy commissioning with simple region of interest detection
- Carefully selected default settings for superb out-of-the-box use
- Advanced parameters for improved detection and false alarm reduction
- Zones and Trails (live and recorded video)
- i-LIDS approved (sterile zone)

Wireless CCTV



WCCTV Body Worn Camera (Record)

WCCTV's Body Worn Camera (Record) is designed and manufactured in the UK, and boasts a range of market-leading functionality.

With resolutions of up to 1080p, and all recordings capturing vital metadata such as date, time, device number and user details, you can be assured of evidential integrity.

The unit contains inbuilt Wi-Fi capability to provide live video transmission and wireless downloading of footage when in range, and the functional design of the device lends itself to ease of use - with a simple one-button record mechanism.

Its 2.8" front-facing screen is proven to reduce conflict and aggression, and the 120 second pre-event recording buffer ensures incidents are not missed.

Features and Benefits

- In-built Wi-Fi capability
- Up to 17 hour battery life
- Local recording up to 128GB providing
- Durable housing - IP65 rated



WCCTV Body Worn Camera (Connect)

The multi-award-winning WCCTV Body Worn Camera (Connect) provides live transmission of video, two way audio, real-time alerts and GPS information via 4G, 3G and Wi-Fi connectivity.

This enables the remote connection to a body worn camera in the field, allowing an operator to view live video, communicate with the wearer and understand their position via GPS.

Alternatively, the wearer of the device can send an alert back to a control room, monitoring station or command centre with their live video, GPS location details and a request for assistance.

The WCCTV Body Worn Camera (Connect) is a single unit, with no external cables, battery packs, transmission units or tethering.

Features and Benefits

- Live transmission via 4G LTE and Wi-Fi
- Reduce requirements for site visits
- Improved safety for lone workers
- Multiple health and safety applications

4G 



WCCTV HD Site Tower

WCCTV's HD Site Tower is a Rapid Deployment CCTV system designed to provide complete security for highway construction and maintenance projects or any locations where temporary monitoring is required.

The 7m tall, bright yellow Site Tower provides a highly-visible deterrent, helping protect valuable assets.

As an all-in-one surveillance solution, the system contains wireless transmission (4G/3G/Wi-Fi) of video and alarms, a heavy duty infrared PTZ camera to allow a remote operator to capture images of any criminal activity, audio speakers to enable a remote challenge and local recording capability.

The WCCTV Site Tower can be installed and fully-operational in just a matter of minutes ensuring your assets are protected.

Its flexible methods of powering make it suitable for deployment in even the most remote locations, without the requirement for any supporting infrastructure. Powering options include:

- Mains – 110/240v
- Eco long-run 150hr battery - allowing generator shutdown at nights/weekends
- Methanol fuel cell - autonomous power for up to 10 weeks

Its multiple motion detectors, audio speakers backed by high-end alarm monitoring and response effectively eliminate the need for costly manned-guarding, reducing security costs by up to 86% without compromising on quality or reliability.

Features and Benefits

- Proactive protection and monitoring
- Visible deterrent
- Up to 86% cheaper than manned-guarding
- Fully manufactured by WCCTV
- Wireless detectors provide an invisible perimeter
- Industry-leading ruggedised PTZ camera with IR capability
- Multiple powering options for optimum flexibility
- Battery back-up activated on power disconnection
- Audio functionality
- Low battery, loss of power and tamper alerts
- 4G, 3G and Wi-Fi connectivity
- Remote access to evidential recorded digital footage

Case Study - Essex Highways

Essex Highways were undertaking road improvements within the County, which required traffic to be diverted through a small village to bypass the road works.

During peak times, traffic flow became an issue and caused major congestion not only through the village, but through the surrounding road networks.

Essex Highways needed a redeployable system to monitor the traffic flow, enabling traffic light signals to be controlled manually in a bid to ease congestion, without having to deploy workers on site.

They were able to deploy a WCCTV Fuel Cell Tower to remotely monitor traffic flow and control the traffic lights accordingly. The Fuel Cell Tower is a totally autonomous rapid deployment CCTV tower which runs off methanol fuel.

Essex highways were able to successfully monitor and manage the traffic from a remote location using a WCCTV Fuel Cell Tower.

Being able to view live footage from congested areas, the Essex Highways team were able to diffuse traffic through the village, which also had greater impact within the surrounding areas.



“We looked at a number of solutions to temporarily monitor the operation of a signalised junction in a relatively remote location.

The Fuel Cell Tower offered by WCCTV was the ideal solution as the unit was completely self-contained, simple to install and provided Essex Highways with a cost effective solution.”

ITS Manager - Essex Highways

To find out more about any WCCTV products & services or to arrange a live demonstration please contact our UK office:

Head Office:

Wireless CCTV Ltd
Charles Babbage House
Kingsway Business Park
Rochdale
OL16 4NW

t: +44 (0) 1706 63 11 66

f: +44 (0) 1706 63 11 22

e: sales@wcctv.com

Southern Office:

Wireless CCTV Ltd
Unit 3,
Scott Road,
Luton,
LU3 3BF

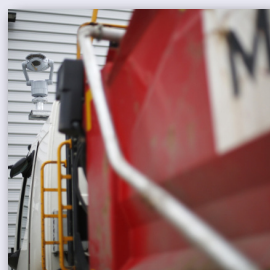
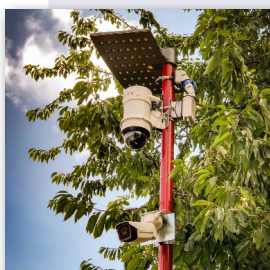
t: +44 (0) 1442 50 30 00

e: sales@wcctv.com

INVESTORS IN PEOPLE™
We invest in people Gold



FM 99538



www.wcctv.co.uk
sales@wcctv.com



FM 99538

INVESTORS IN PEOPLE™
We invest in people Gold

wcctv
WIRELESS CCTV